

IN THE DARK

a short film

by

Joe Golc



LOGLINE

A mourning man resorts to extreme meditative methods to rid himself of grief.

LOCATIONS

In The Dark takes place in three locations:

- A bathroom
- A kitchen
- And *the void*

(more on the latter momentarily)

BATHROOM (INTERIOR)

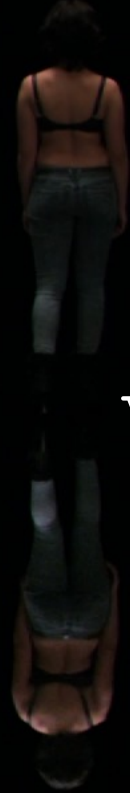
Must include a bathtub big enough to accommodate a modest-sized man and/or a camera rig (filming will occur in and outside the tub, including underwater).



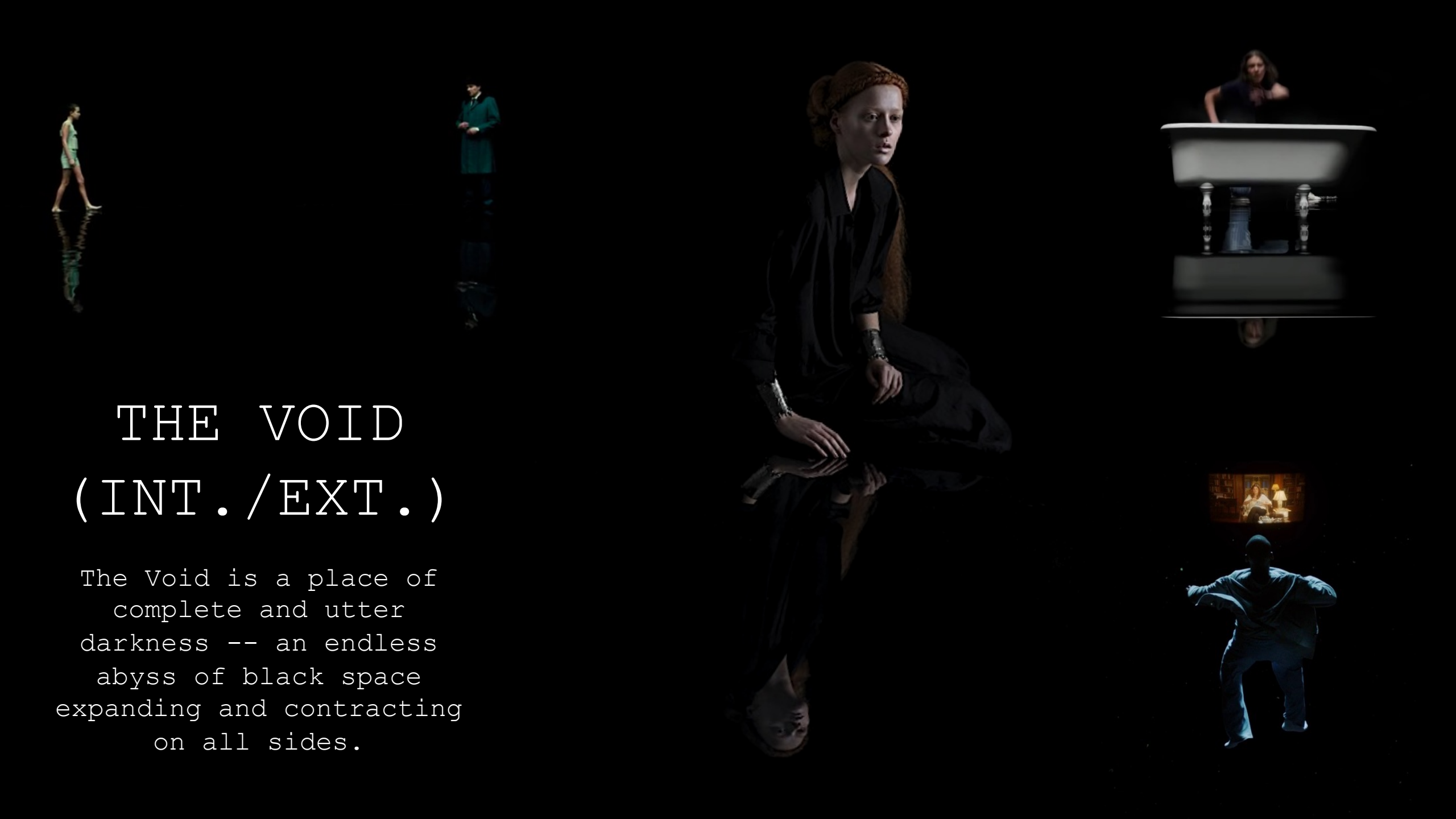


KITCHEN (INTERIOR)

Must be (relatively) near our bathroom and include a refrigerator with an attached freezer door that can accommodate numerous large bags of ice.



THE VOID

A woman with long red hair, wearing a black dress and a headband, sits in the center of a dark void. She is surrounded by several floating, semi-transparent scenes from a film. To her left, a woman in a green dress walks. To her right, a man in a blue suit stands. Above her, a woman in a black dress stands on a white platform. Below her, a man in a white suit crouches. In the bottom right, a scene shows two people sitting at a table in a dimly lit room. The text 'THE VOID (INT./EXT.)' is written in white, serif font on the left side of the image.

THE VOID (INT./EXT.)

The Void is a place of
complete and utter
darkness -- an endless
abyss of black space
expanding and contracting
on all sides.

CHARACTER

MAX (30s, lean, unshaven)

This is a man of *mileage* -- a soul who's endured more at 30 than most have in a lifetime.

A young father who's known both the highest heights of happiness and the deepest depths of despair.

[When we meet him, he's all but lost in the latter]

He's a shell of his former self. An ill vessel driven by ungovernable grief -- grief held barely at bay behind hard and haggard eyes.

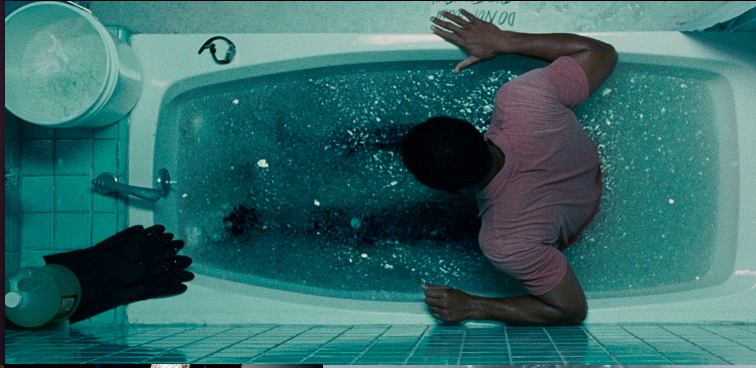
His sole purpose the search for answers no one seems capable to give.





LOOK & FEEL





STYLE

At its core, ***In The Dark*** is about a man grappling with grief -- a painful affliction that depreciates everything its inhabitant sees. It's cold, raw, and, most of all, indifferent.

That is the sentiment the aesthetics of the film must echo and enhance.

From the opening shot, we want to immerse the audience into the excruciating world of grief. Force them to feel the serrated stabs of the ice-cold water, the claustrophobia and astrophobia of the void, and the maddening uncertainty Max must live with.

A creative array of underwater shots, extreme closeups, and long, follow takes should help elicit the desired effect.

THEMES

In The Dark is a dark, poignant tale about the power of grief, the pernicious affect, when coupled with uncertainty, it can have on the human psyche, and the lengths we go to be free of it.

The title not only describes the state in which we find Max but is a polysemic reference to the feeling of grief itself.

To be 'in the dark' is to be in pain. That is to say that Max exists in a physical dark, a metaphorical dark and, thanks to the void, a literal dark at all once.

To be 'in the dark' is also a reference to uncertainty -- living in a world of not knowing. It's agonizing. Maddening. And left unencumbered, it can drive people to depths rational minds would never dream to delve.

THANK YOU.